

TRACK MOUNTED JAW CRUSHER

Hail Track - HTJ Series



ABOUT US

Hailstone Innovations Pvt. Ltd. is a global organization specializing in the engineering, design, and fabrication of capital equipment. We combine decades of industry expertise with a forward-thinking operational approach.

Our strength lies in a deep technical heritage fused with a culture of continuous improvement. We go beyond manufacturing machinery by investing in people, processes, and emerging technologies to enhance quality across the entire value chain. This commitment ensures that every Hailstone system is reliable, efficient, and future-ready engineered to meet the evolving needs of our customers worldwide, across the crushing and screening, mineral processing, and recycling sectors.



OVERVIEW

SPECIFICATION

Total weight	17150 kg (37809.278-lbs)
Transportation truck (L x W x H), mm	6382 x 2250 x 2750 (mm)
Transportation container (L x W x H), mm	9366 x 2250 x 2500 (mm)
Working (L x W x H), mm (in)	9366 x 2250 x 2800 (368.7 x 88.6 x 110.2)
Crusher type	Secondary crusher
Power unit	Volvo Eicher CPCB4 +
Capacity	20 - 50 TPH

The Hailstone HT45 Track-Mounted Jaw Crusher delivers powerful high-capacity crushing performance with exceptional operational efficiency. Engineered for demanding quarrying, recycling, C&D; and mining applications, the HT45 combines robust design with advanced mobility to maximize productivity on every site. Featuring a heavy-duty jaw crusher, optimized feed opening, and intelligent material flow design that ensures smooth operation with reduced blockages and consistent output. Built for reliability, efficiency, and ease of maintenance, the HT45 is the ideal solution for high-performance crushing operations in the toughest environments.

- **Output capacity up to 50 TPH** with a high reduction ratio, making it suitable for demanding applications such as quarrying, mining, demolition, and recycling, while ensuring consistent product quality.
- **The VFD-controlled** feeder maintains a regulated material flow ensuring smooth, efficient crushing with minimal interruptions.
- **Dual power mode** supports both on-board diesel and external electric operation, while IoT-based diagnostics enable real-time tracking, reducing downtime and maintenance costs.

APPLICATIONS



Asphalt

Built for high-performance asphalt applications with consistent output, superior material shaping, and reliable operational efficiency.



Recycling

Recycled construction & demolition waste



Landfill

Delivering efficient material processing, high mobility, and dependable performance in tough landfill conditions.



JAW CRUSHER

SPECIFICATION

Crusher type	JC 45
Opening size	711 x 407 mm (28" x 16")
Crushing speed	360 rpm
CSS range	20-100 mm (3"- 8")
Max feed size	350 mm
Construction	High grade carbon steel (bolted)
Lubrication	Grease
Bearing	Heavy-duty spherical roll bearing
CSS adjustment	Wedge type (Mechanical)
Jaw plates	Multiple options are available based on the applications listed below



*Images used in this brochure are for illustrative purposes only. Actual products, specifications, colors, features, and configurations may vary without prior notice. All photographs, renderings, and visuals are intended to provide a general representation of the equipment and may include optional accessories or features not included as standard. Please contact Hailstone for the latest product information and specifications.

CRUSHING CHAMBER OPTIONS

	Quarry Tooth		Superteeth		Quarry + super grip	
	G7	X-life	G7	X-life	G7	X-life
Blasted rock						
Difficult and abrasive	•••	•••	••	•••	•••	•••
Difficult and non abrasive	••	••	••	••	•••	••
Medium and abrasive	•••	•••	••	••	•••	••
Medium and non abrasive	•••	••	••	•••	••	••
Easy and abrasive	•••	•	••	•••	••	••
Easy and non abrasive	•••		••	•	••	••
Slabby soft rock	•				••	
Gravel						
Abrasive			•••	••		
Non abrasive			••	•		
Slippery/ round rock						
Abrasive	•		••	•••	•••	•••
Non abrasive	•		••	•••	•••	••
Concrete recycling			•	••		
Demolition waste recycling			•	••		

• Can be used •• Good choice ••• Recommended

ELECTRICAL SPECIFICATION

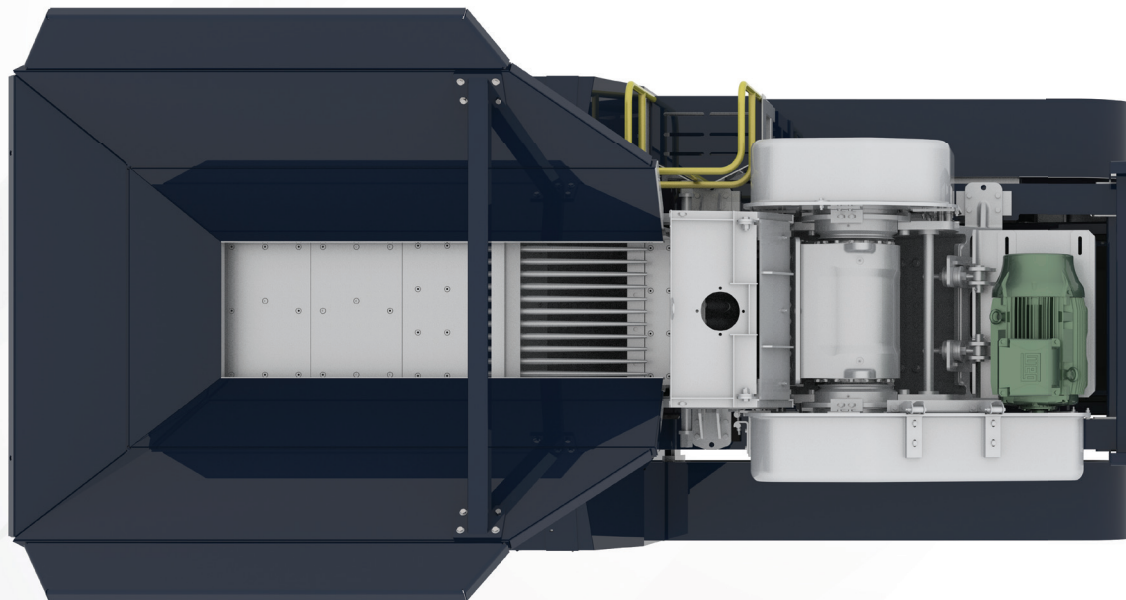
Motor capacity	37 KW (50 HP)
Rated current	65.3A
Speed	1480 RPM
Power supply	415V 50HZ



HOPPER

SPECIFICATION

Hopper Capacity	2 m ³
Hopper Length	2795 mm
Hopper Width	2150 mm
Feed Height	2800 mm
Feed Width	2150 mm



The crusher hopper in a mobile crusher is precisely engineered to handle high-volume material intake while maintaining a consistent and controlled feed flow to the crushing chamber under the most demanding operating conditions. Designed with a heavy-duty reinforced steel structure, the hopper is capable of withstanding continuous impact loading from large rock sizes, abrasive quarry materials, and harsh mining environments. Its optimized feed geometry ensures efficient material distribution, minimizes blockages and bridging, and improves the overall productivity of the crushing process.

Integrated with robust side walls and wear-resistant liners, the hopper effectively reduces material spillage and protects critical structural components from excessive wear, thereby extending service life and lowering maintenance requirements. The design also supports seamless loading through excavators enabling uninterrupted material transfer for maximum operational efficiency.

Engineered specifically for mobile crushing applications, the hopper contributes to reduced plant downtime, enhanced throughput capacity, and superior crushing performance while maintaining excellent site mobility and adaptability across varying terrains. Its rugged construction and reliable feeding characteristics make it ideal for high-performance quarrying, mining, demolition, and recycling operations operating in extreme working environments.



*Images used in this brochure are for illustrative purposes only. Actual products, specifications, colors, features, and configurations may vary without prior notice. All photographs, renderings, and visuals are intended to provide a general representation of the equipment and may include optional accessories or features not included as standard. Please contact Hailstone for the latest product information and specifications.

VIBRATING GRIZZLY FEEDER

FEEDER

Model	GFEM 2107
Overall size (W x L)	2100 x 700 mm
Drive mechanism	Vibro motor
Stroke adjustment	By fine-tuning the eccentric counter weight
Suspension	Heavy-performance coil springs
Grizzly bar length	580 mm
Grizzly area (W x L)	580 x 700 mm
Grizzly bar opening	40 - 70 mm



*Images used in this brochure are for illustrative purposes only. Actual products, specifications, colors, features, and configurations may vary without prior notice. All photographs, renderings, and visuals are intended to provide a general representation of the equipment and may include optional accessories or features not included as standard. Please contact Hailstone for the latest product information and specifications.

ELECTRICAL SPECIFICATION

Motor capacity 2 x 1.5 kw (2 x 2 hp)
Speed 500 - 1000 rpm (variable)

FEATURES

- **High-durability grizzly bar**
finger rod & grizzly option
- **Modular vibrator offers**
durability, adjustable stroke, and easy maintenance.
- **High wear-resistant liners**
protect impact zones and reduce downtime.



LONG LASTING
WEAR PARTS



FLEXIBLE & RELIABLE
IN OPERATION



EASY
INSTALLATION



MAIN CONVEYOR

Conveyor type	Fixed-speed electric troughed conveyor.
Belt type	Plain EP630/4P belt with heavy-duty rubber covers, 6 mm top and 2 mm bottom.
Belt width	800 mm
Discharge height	2012 mm
Stockpile volume	12 m ³
Working angle	15°
Conveyor speed	1.6 m/s
Impact bars	Underneath Jaw Crusher
Drive	Electric drive motorized pulley
Belt adjustment	Head drum screw adjusters
Dust suppression	Spray bar fitted at head drum
Lubrication	Zero lubrication in head drum



MOTORIZED PULLEY

The Motorized Pulley is built for maximum uptime with a robust and dependable design, featuring zero lubrication in the head drum for uninterrupted operation. Its low-maintenance construction helps minimize operating costs and increase productivity, while the high-efficiency system ensures optimal power transmission and reliable performance.

DUST SUPPRESSION SYSTEM

Atomiser spray bars are installed above the crusher inlet, product conveyor feed, and discharge points, all connected through piping to a common inlet manifold.

Type	Clean water atomising nozzles
Inlet	Single point on chassis
Pressure	6 bar (87 psi)
Frost protection	Via system drain valves
Pump	Optional



*Images used in this brochure are for illustrative purposes only. Actual products, specifications, colors, features, and configurations may vary without prior notice. All photographs, renderings, and visuals are intended to provide a general representation of the equipment and may include optional accessories or features not included as standard. Please contact Hailstone for the latest product information and specifications.

POWER UNIT & HYDRAULICS

SPECIFICATION

Engine	Volvo Eicher
Engine power	55 KW
Engine speed	1500 rpm
Alternator	82.5 KVA
Fuel tank capacity	150 L
Hydraulic tank capacity	150 L
Hydraulic pump motor	22 KW (Tracking and Folding / Unfolding setup)



*Images used in this brochure are for illustrative purposes only. Actual products, specifications, colors, features, and configurations may vary without prior notice. All photographs, renderings, and visuals are intended to provide a general representation of the equipment and may include optional accessories or features not included as standard. Please contact Hailstone for the latest product information and specifications.

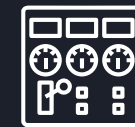
Crusher motor 37 KW (50 HP)

Main discharge conveyor 5.5 KW

Ambient temperature + 14° F to + 113° F (6561.7') above sea level. cold kit available for low level ambient temperature



Delivers reliable power for smooth and efficient crushing operations in tough working conditions.



Centralized interface for monitoring and controlling all crusher operations on the track-mounted jaw crusher.



CRAWLERS

SPECIFICATION

Tracks	Bolt on tracks
Sprocket centres	2908 mm
Track width	400 mm
Gradeability	15°
Speed	Dual speed 0.6 KMPH to 1.2 KMPH
Drive	Hydraulic motors - Integrated drive
Tensioning	Hydraulic adjuster, Grease Tensioned



*Images used in this brochure are for illustrative purposes only. Actual products, specifications, colors, features, and configurations may vary without prior notice. All photographs, renderings, and visuals are intended to provide a general representation of the equipment and may include optional accessories or features not included as standard. Please contact Hailstone for the latest product information and specifications.

OVERVIEW

The crawlers are heavy duty undercarriages designed to provide mobility, stability, and smooth movement across rough quarry and mining terrains. This crawler-type design enables the crusher to be easily relocated on-site, reducing setup time and improving operational flexibility in demanding applications.



Track-mounted crawler system designed for superior mobility, stability, and reliable performance across rugged terrains.



PLANT CONTROLS & SAFETY

CHASSIS

- Robust welded I-section structure engineered for maximum strength and easy accessibility.
- Emergency stop systems positioned at the chassis corners.

RADIO REMOTE CONTROL

- Equipped with integrated tracking functions & plant stop control system.

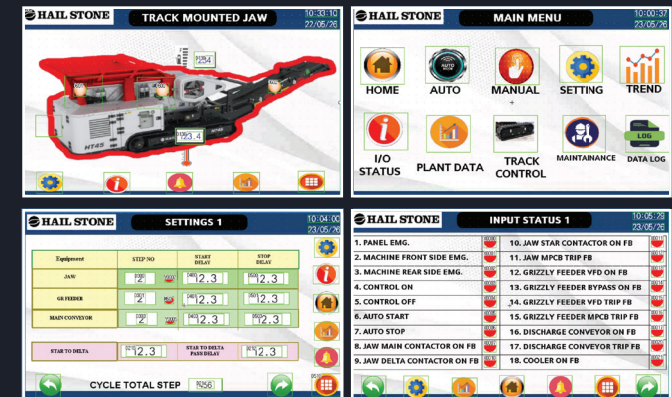
Wireless Tracking Remote :

- ◆ Advanced wireless track control.
- ◆ Easy access to wide range of commands
- ◆ Designed to ensure maximum operator comfort and safety.

SAFETY PLATFORMS & LADDERS

Platforms are designed for easy inspection and maintenance

- Emergency stop buttons positioned at all four corners of the control panel, integrated through a safety relay system.



PLANT CONTROLS

- Full Automated PLC control panel
- UL certified control panel
- Full system diagnostics & monitoring

Key functions controlled from the panel include:

- Safety PLC system integration
- Feeder start/stop
- Feed speed control (*Auto Feeding System*)
- Crusher CSS control



*Images used in this brochure are for illustrative purposes only. Actual products, specifications, colors, features, and configurations may vary without prior notice. All photographs, renderings, and visuals are intended to provide a general representation of the equipment and may include optional accessories or features not included as standard. Please contact Hailstone for the latest product information and specifications.

OPTIONAL FEATURES

EXTENDED HOPPER

Provides a loading width of 2150 mm at the rear of the feeder.

PRODUCT CONVEYOR DUST COVERS

Aluminium dust covers along discharge end of conveyor.

CONTROL PANEL POSITIVE PRESSURISATION

An additional unit designed to reduce dust particles within the control panel.

A continuous flow of clean air is passed through the cabinet whilst the unit simultaneously filters out any particulate laden air.

MAGNETIC SEPARATOR

Options Single pole (S.P.)
 Twin pole (T.P.)

ELECTRIC WATER PUMP

An Electrically powered water pump is available to power the dust suppression system

LIGHTING MAST

Lighting tower complete with 48W LED 3360lm lights

HOT/COLD CLIMATE OILS

Cold climate oils - (recommended for ambient temperatures between -4° F & +86° F) - Hydraulic & lubrication oils & Engine cold start kit. Other component modifications may be required for low temperature operations. Please contact our sales& applications department with any queries.

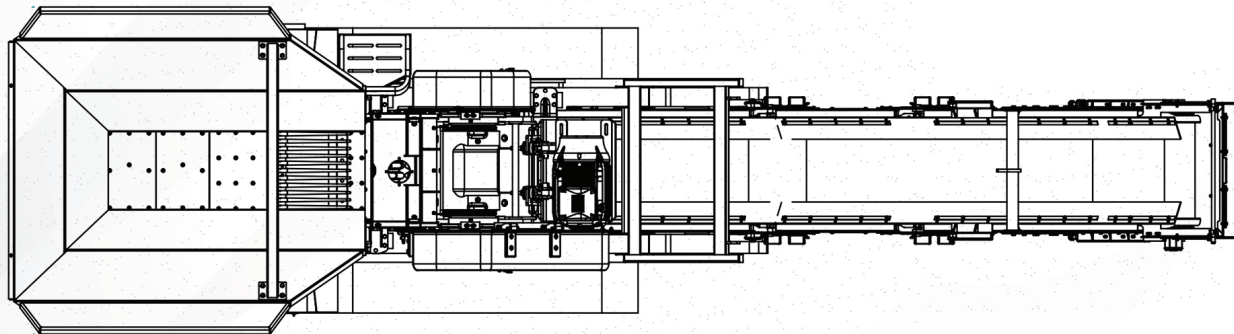
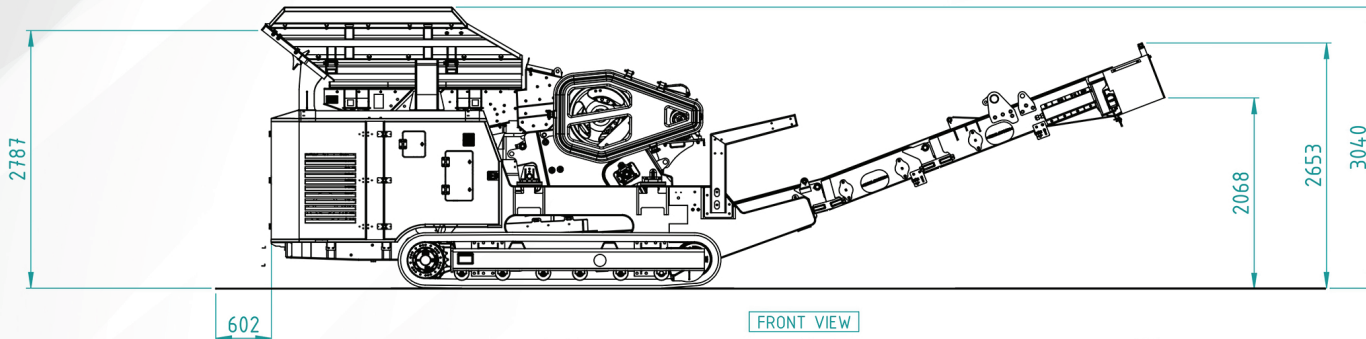
Hot climate oils - (recommended for ambient temperatures between +59° F to +122° F)

OPTIONAL EXTRAS

- Radio Remote control
- Product conveyor belt weigher



TRANSPORT DIMENSIONS



*Images used in this brochure are for illustrative purposes only. Actual products, specifications, colors, features, and configurations may vary without prior notice. All photographs, renderings, and visuals are intended to provide a general representation of the equipment and may include optional accessories or features not included as standard. Please contact Hailstone for the latest product information and specifications.

The transport dimensions of the track-mounted jaw crusher are strategically engineered to ensure safe, efficient, and regulation-compliant mobility across highways, quarry roads, and remote project sites. Designed with a compact yet robust structural configuration, the machine allows convenient transportation with optimized overall length, width, and height parameters, minimizing logistical challenges during relocation. The foldable conveyors, hydraulically adjustable components, and integrated track chassis system enable quick transition between transport and operational modes, reducing setup time and enhancing site mobility. Engineered for heavy-duty applications, the transport design ensures excellent weight distribution, structural stability, and ease of loading onto low-bed trailers, delivering superior transport efficiency and operational flexibility for mining, quarrying, and large-scale crushing operations.



Efficient Transport for
Crushing Solutions







CRUSHING | MINING | SCREENING | WASHING | RECYCLING SOLUTIONS



2500+
INSTALLATIONS

120+
PRODUCT
MODELS

ISO
9001 : 2015
CERTIFIED COMPANY

CE
CERTIFIED



HAILSTONE INNOVATIONS PRIVATE LIMITED

KINFRA Integrated Industrial Park, Kanjikode – 678 621, Kerala, India.

Mobile: +91 9746644588, | +91 8714634599 | E-mail: salesist@hailstoneinc.com

www.hailstonein.com

@hailstoneinnovations

*Hailstone equipment complies with all applicable safety and regulatory standards. The plant performance figures provided in this brochure are for reference purposes only and may vary depending on feed material gradation, material characteristics, moisture content, and operating conditions. Any information relating to capacity or performance is intended solely as guidance and shall not be considered legally binding.



Scan here to reach our website